

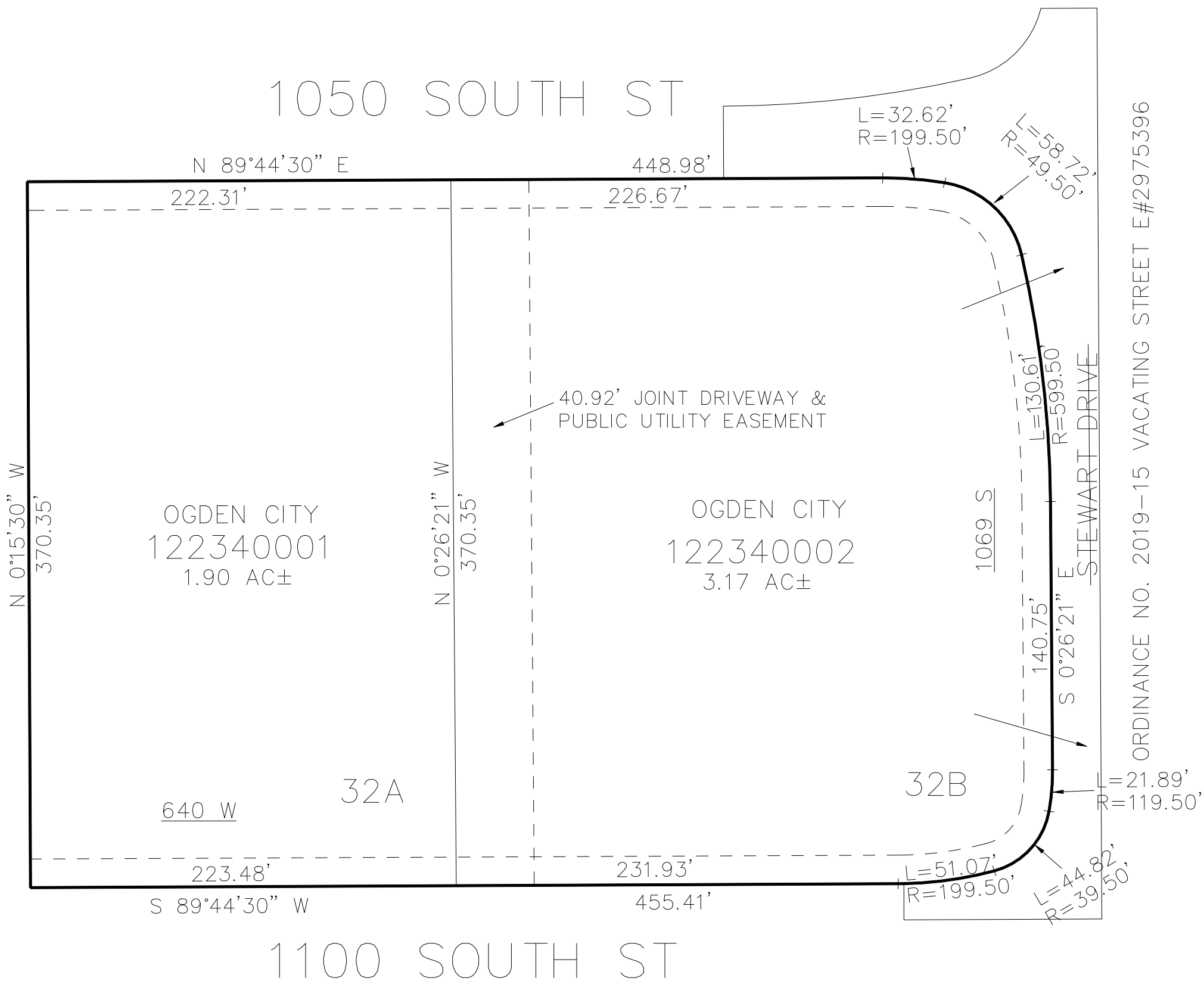
PART OF THE NE.1/4, OF SECTION 19, T.6N., R.1W., S.L.B. & M.
BUSINESS DEPOT OGDEN – PLAT 13 LOT 32 2nd AMENDMENT

234

TAXING UNIT: 359

IN OGDEN CITY
SCALE 1" = 60'

SEE PAGE 210



ORDINANCE NO. 2019-15 VACATING STREET E #2975396

SEE PAGE 210

10' UTILITY & DRAINAGE EASEMENTS EACH
SIDE OF PROPERTY LINES AS INDICATED
BY DASHED LINES EXCEPT AS OTHERWISE
SHOWN.

SEE PAGE 210

FOR COMPLETE ENG DATA SEE
ORIGINAL DEDICATION PLAT IN
BOOK 69, PAGE 91 OF RECORDS.